

## LD-1616B

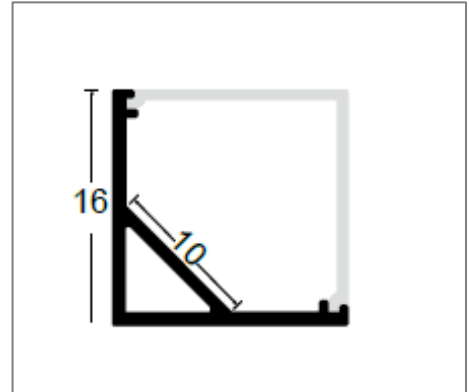
### Application

LED Strip Light is designed to use for ceiling cove lighting, furniture lighting, indirect lighting and etc.



### Specification

**Mounting Method** Surface Mount



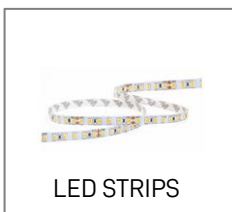
### Accessories



### Ordering Data

Part No.	LED Quantity (LEDs/M)	LED Strip Width (mm)	Wattage
EVO-LD-1616B	> 112	< 10mm	< 15W/M

Related Product : Applicable with digital catalogue only  
 (Please click the product photo to redirect towards the respective cut-sheet)



\* Product specification subject to change according to technology improvement.