

## LD-1616

### Application

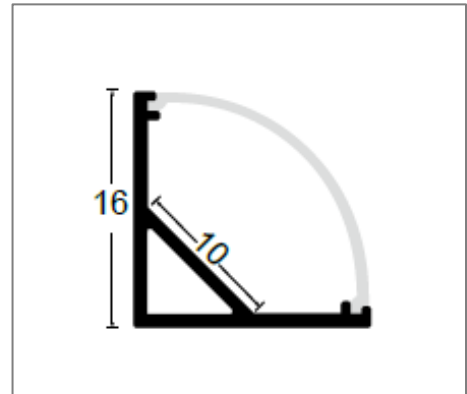
LED Strip Light is designed to use for ceiling cove lighting, furniture lighting, indirect lighting and etc.



### Specification

**Mounting Method**                      Surface Mount

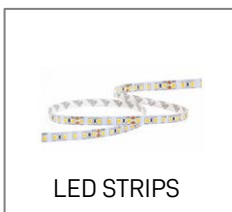
### Accessories



### Ordering Data

| Part No.    | LED Quantity (LEDs/M) | LED Strip Width (mm) | Wattage |
|-------------|-----------------------|----------------------|---------|
| EVO-LD-1616 | > 112                 | < 10mm               | < 15W/M |

Related Product : Applicable with digital catalogue only  
 (Please click the product photo to redirect towards the respective cut-sheet)



\* Product specification subject to change according to technology improvement.