

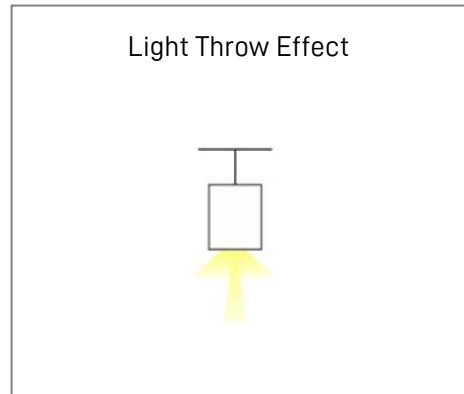
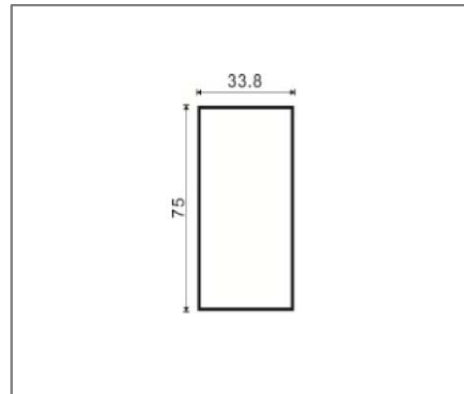
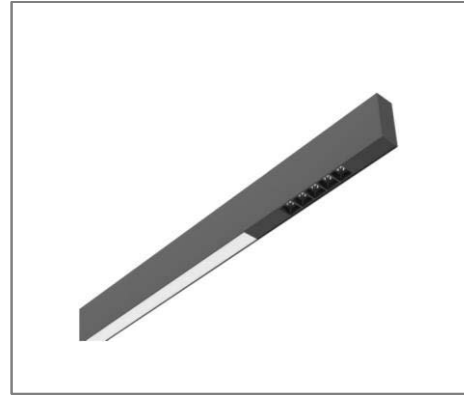
G30-LS3375-D SERIES

Application

Suspended Linear Light is designed to use for office buildings, shopping centers, convenience stores, modern trade stores, discount stores, hotels, restaurants, residences, recreation centers, museums, etc.

Specification

| | |
|--------------------------------------|---------------------|
| Input Voltage | 200-240 V AC |
| IP Rating | IP20 |
| Rendering Index | > 90 |
| Lumen Per Watt | 120lm/w |
| LED Operating Life | >50, 000 Hrs |
| Colour Correlated Temperature | 3000K, 4000K, 6500K |
| Available Colour | White/Black/Grey |
| Beam Angle | 15° / 30° / 45° |
| Dimmable | Optional |
| Mounting Method | Suspended Mounted |



Ordering Data

| Part No. | Power | Length (L x W x H) |
|------------------|-------|------------------------|
| EVO-G30-LS3375-D | 30W | 1198mm x 33.8mm x 75mm |

Accessories



* Product specification subject to change according to technology improvement.