

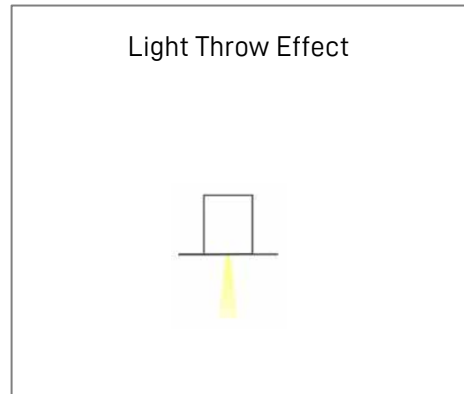
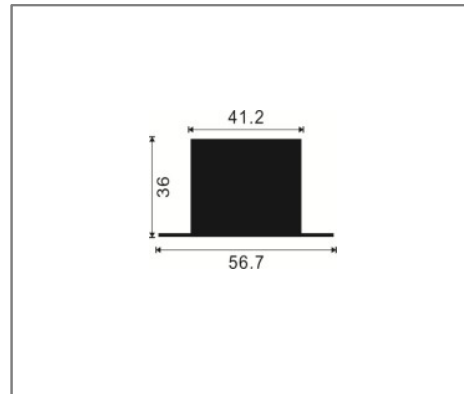
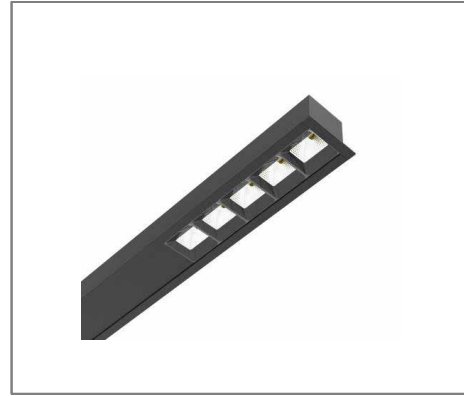
## G40-LE4136-B SERIES

### Application

Recessed Linear Light is designed to use for office buildings, shopping centers, convenience stores, modern trade stores, discount stores, hotels, restaurants, residences, recreation centers, museums, etc.

### Specification

<b>Input Voltage</b>	200-240 V AC
<b>IP Rating</b>	IP20
<b>Rendering Index</b>	> 90
<b>Lumen Per Watt</b>	120lm/w
<b>LED Operating Life</b>	>50, 000 Hrs
<b>Colour Correlated Temperature</b>	3000K, 4000K, 6500K
<b>Available Colour</b>	White/Black/Grey
<b>Beam Angle</b>	15° / 30° / 45°
<b>Dimmable</b>	Optional
<b>Mounting Method</b>	Recessed Mounted



### Ordering Data

Part No.	Power	Length (L x W x H)
EVO-G40-LE4136-B	36W	1145mm x 41.2mm x 36mm

\* Product specification subject to change according to technology improvement.